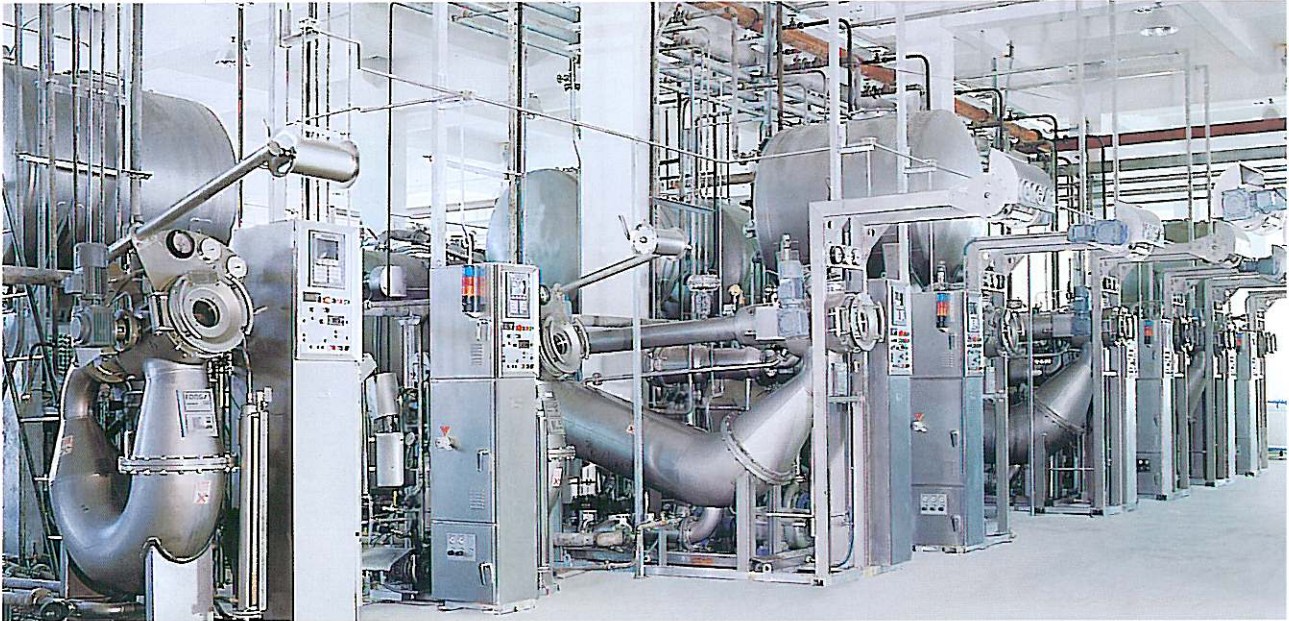


## Advantages, Standard Features and Options



The piece dyeing machine is designed for small batches. Low liquor ratio, small power consumption and fast fabric run ensures the dyeing quality and

result. Different dyeing recipes and process techniques can be applied without modification. The machine is available in different batch sizes.

### Standard Features

- Machine body and major parts wetted by dyeing liquid are made of 316Ti/316L/1.4571/1.4404 corrosion resistant stainless steel
- Heavy duty stainless steel centrifugal pump for optimal dye liquor circulation, with frequency inverter drive
- Lifter reel driven by frequency inverter controlled motor
- Service tank with dosing system and valve system (ALLFIT-5 without feed pump)
- Highly efficient steam heat exchanger
- Level indicator with level sensor
- Pneumatic valves controlling heating, cooling, filling, draining and overflow rinsing
- Take-off roller (ALLFIT-5 without take-off roller. Take-off roller for ALLFIT-10 without motor)
- Fabric tangle release device (ALLFIT-5 without this device)
- Main control cabinet with FC28 program controller
- Fuzzy logic temperature control software

### Advantages

- Suitable for both atmospheric and high temperature dyeing machines
- With the PLUG & RUN\* concept, the installation of the machine is fast and simple
- Development of new process technique

\* Applicable to specific model only. Others models must be assembled at site.

### Options

- Analog fresh water metering fill
- Stirrer for service tank (ALLFIT-5 only)
- Programmable 2nd fill
- Programmable 2nd drain
- Seam detector